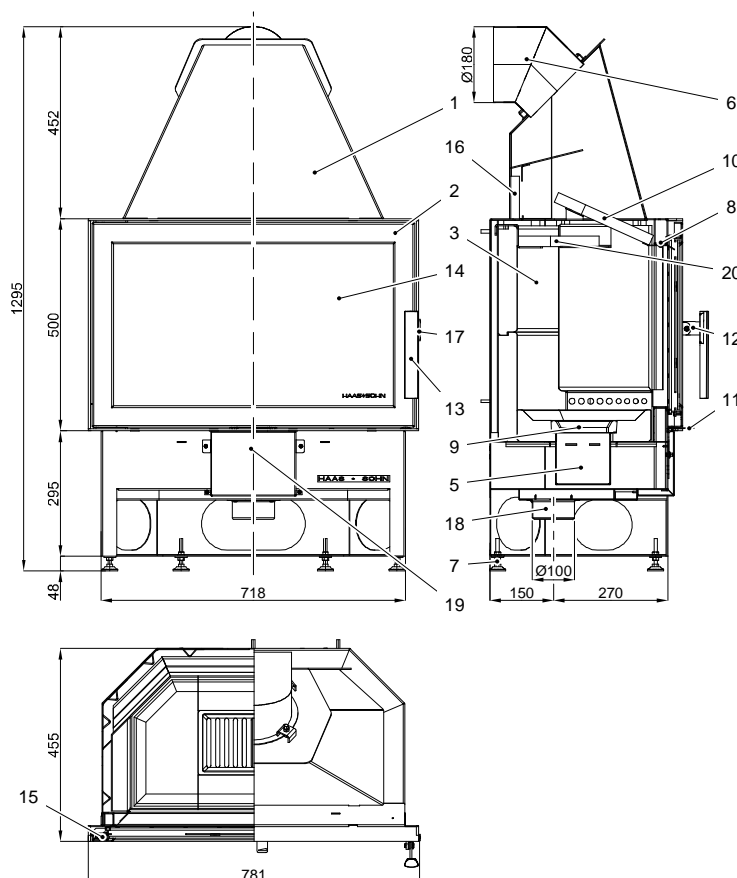


Complete product information, „HAAS+SOHN KOMFORT IV 180.18-AL“



No.	Product no.	Description
1		Body of the stove
2	0618018105300	Door to the combustion chamber
3		Refractory
5	0618018005600	Ashpan
6	0618018015002	Supports for the exhaust flue
7	0089000020005	Adjustable feet
8		Secondary air
9	0020100130005	Grate 260x152
10	0050500040005	Plate for diverting the exhaust Glases angled upwards
11		Air intake control
12	0618516075310	Fitting for the door handle
13	0420114005371	Door handle
14	0618018025301	Inspection window
15	0088400060005	Door spring
16	0050500050005	Insulating brick
17	0618018105035	Door latch
18	0088500050005	Socket for the pipe supplying air from outside Ø 100
19		Air duct
20	0618618005036	Bottom plate

Installation of the combustion chamber liner:

Note: Labels with the short designations are attached to the mounting parts.

1. Install first row: first HSM (rear block centre) (top groove rearward), then rear blocks left and right (top groove rearward) and front blocks.
2. Insert bottom blocks 1, 2 and 3.
3. Insert ash pan (5) and grate (9).
4. Install second row: rear blocks and lateral blocks.
5. Insert insulating block (16) and draught deflector plate (10).

Installation of the insulating block: Insert insulating block (16) with the short edge into the upper sheet steel groove (see drawing) and let slip into the lower sheet steel groove.

Installation of the draught deflector plate: Insert draught deflector plate (10) slantwise (bevelled corners at the back) and place it on the lateral sheet steel angles, then lift the front edge and place it on the support plate.

Important: Push the draught deflector plate to the front until the limit stop is reached!

Important: After cleaning of the appliance, or before returning it to service, checks must be carried out to ensure that the baffle plates are in the correct position (see diagram).

Suitable fuels:

The following fuels are permitted for use in your wood burning stove (see also section 5.1):

Dry, well seasoned, unadulterated wood and wood briquettes which comply with DIN 51731

Description of the system for supplying the air needed for combustion:

The system for supplying the air needed for combustion in stove unit type 180.18-AL has three settings: the primary air is adjusted by means of the air intake control(11) With the handle in position 2 ('right') the primary air. I enters through the grate, and the primary air II enters through that area of the combustion chamber which is to wards the front of the stove. With the handle in position 1 ('middle') the primary air I only enters via the grate. The amount of secondary air is set at an optimum level for the unit to provide the necessary ventilation to keep the window clean and to provide the necessary air for secondary combustion; it is permanently adjusted for increased comfort. The pre-heated secondary air flows past the top end of the inspection window (8).

Air intake control	Primary air I	Primary air II	Use:
2 "right"	open	open	For use when it is heating up and after fuel has been added
1 "middle"	shut	open	In normal operation
0 "left"	shut	shut	Only for keeping the embers glowing

Connection for providing the air needed for combustion:

In airtight buildings there can be reduction in the oxygen content of the room in which the stove is set up; it must therefore be ensured that there is adequate ventilation. The stove unit type 180.18-AL therefore offers you the possibility of drawing in the air needed for combustion from outside. The stove can then be operated without having to depend on the air within the room. In order to do this the air from outside that is needed for combustion is supplied by means of a flexible pipe attached to the socket for the pipe (18). It is possible for you to change the position of the pipe socket to the left, right or rear of the stove unit. The end of the pipe carrying the air must be located in the open air, or in a well ventilated room situated within the building. Operation of the stove unit in connection with an air conditioning and ventilation system is permitted. When installing the stove unit in connection with an automatic air conditioning and ventilation system the end of the pipe supplying the air must not be located in a room which is connected to this system.

The amount of fuel and adjustment of the air intake control:

Lighting, and heating the appliance up: see sections 5.4, 5.5 and 5.6 in the instructions for use of the stove.


Use the gloves provided to protect you against the heat when operating the air intake control.

Before every addition of fuel, the air intake control is to be closed completely (handle setting 'left').

Brennstoffe	maximale Brennstoffmenge	Primärluft: Luftregler	Sekundärluft (ohne Regelung)
Scheitholz	2 - 3 Scheite (ca. 2 – 2,5 kg)	10 Minuten lang Hebelstellung „2“ (rechts), dann Hebelstellung „1“ (Mitte)	offen
Holzbriketts	1 Holzbrikett (2 kg)		

Tip for burning wood: Every time the stove is lit leave the appliance in the 'right' position until the fuel is burning well (around 10 minutes). (This time can vary somewhat depending on the amount of draught and the pressures involved).When adding fuel shut the air intake as indicated.

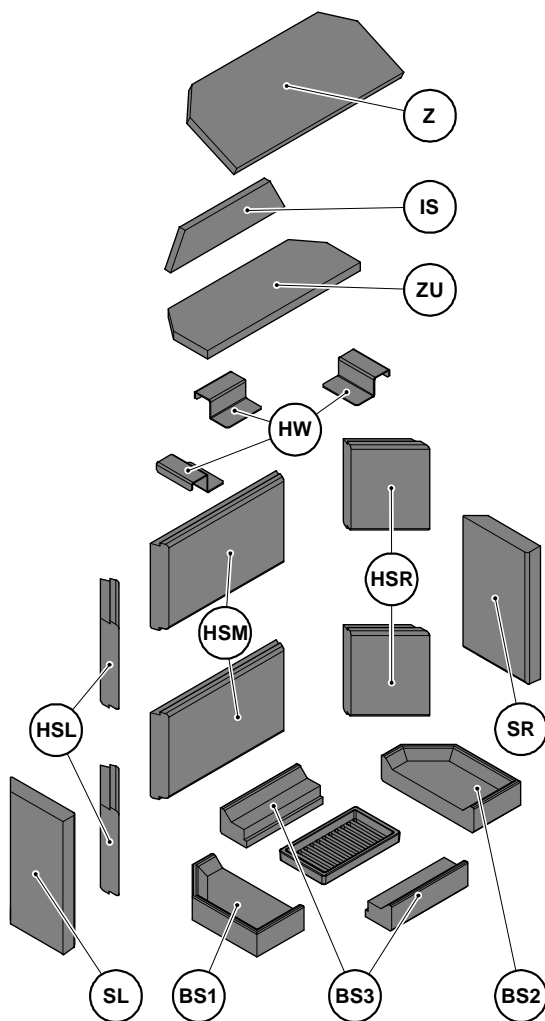


HAAS + SOHN OFENTECHNIK GMBH		
URSTEIN NORD 67 A-5412 PUCH		
Kamineinsatz Bauart : EN 13229-W / Zeitbrandfeuerstätte		
Typenbezeichnung:	180.18	
Variante:	Komfort – IV 180.18 AL .	
Herstellnummer:	1303180800085	
Wärmeleistungsbereich:	3,9 - 8,3 kW	
Nennwärmeleistung	8,0 kW	
Zugelassener Brennstoff:	Holz, Holzbrikett nach - DIN 51731,	
Staub bez.auf 13% O ₂ : 22 mg/Nm ³	Wirkungsgrad: 80,3%	CO bez. auf 13% O ₂ : 0,10%
Abgastemperatur am Stutzen: 320°C	Nox bez. 13% O ₂ : 96 mg/Nm ³	HC bez. auf 13% O ₂ : 42 mg/Nm ³
Mindestabstände	seitlich:	siehe Aufstellungs-und
zu brennbaren Bauteilen:	hinten:	Bedienanleitung
	vorne im Strahlungsbereich:	80 cm
Prüf Nr. VKF:		Anbringungsjahr
Prüfstellenkennziffer: 1625 / Prüf Nr. RRF- 29 12 3110		2013
Lesen und befolgen Sie die Bedienungsanleitung!		
Mehrfachbelegung des Schornsteins ist zulässig		

Prüf. Nr.

Stove unit: Komfort IV 180.18-AL:	
RRF Oberhausen	RRF-29 12 3110
Kaminbausätze:	
stove „Alpes-II“,	RRF-40 06 1033
stove „Jura-II“:	RRF-40 06 1033
stove „Genf-II“	RRF-40 08 1686
stove „Adonis“	RRF-40 12 3013

Fitting the combustion chamber lining for the „HAAS+SOHN Komfort IV 180.18-AL“



Description	intems	Product no.
BS1 (stone 1)	1	0050110490005
BS2 (stone 2)	1	0050110500005
BS3 (stone 3)	2	0050110480005
SR (stone right)	1	0050110120005
SL (stone left)	1	0050110110005
HSM (stone middle)	2	0050110060005
HSR (stone right)	2	0050110070005
HSL (stone left)	2	0050110140005
IS (isolating brick)	1	0050500050005
Z (plate)	1	0050500040005
ZU (bottom plate)	1	0618618005036
HW (holder)	3	0618618005035

